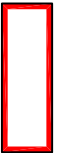
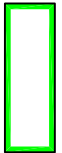
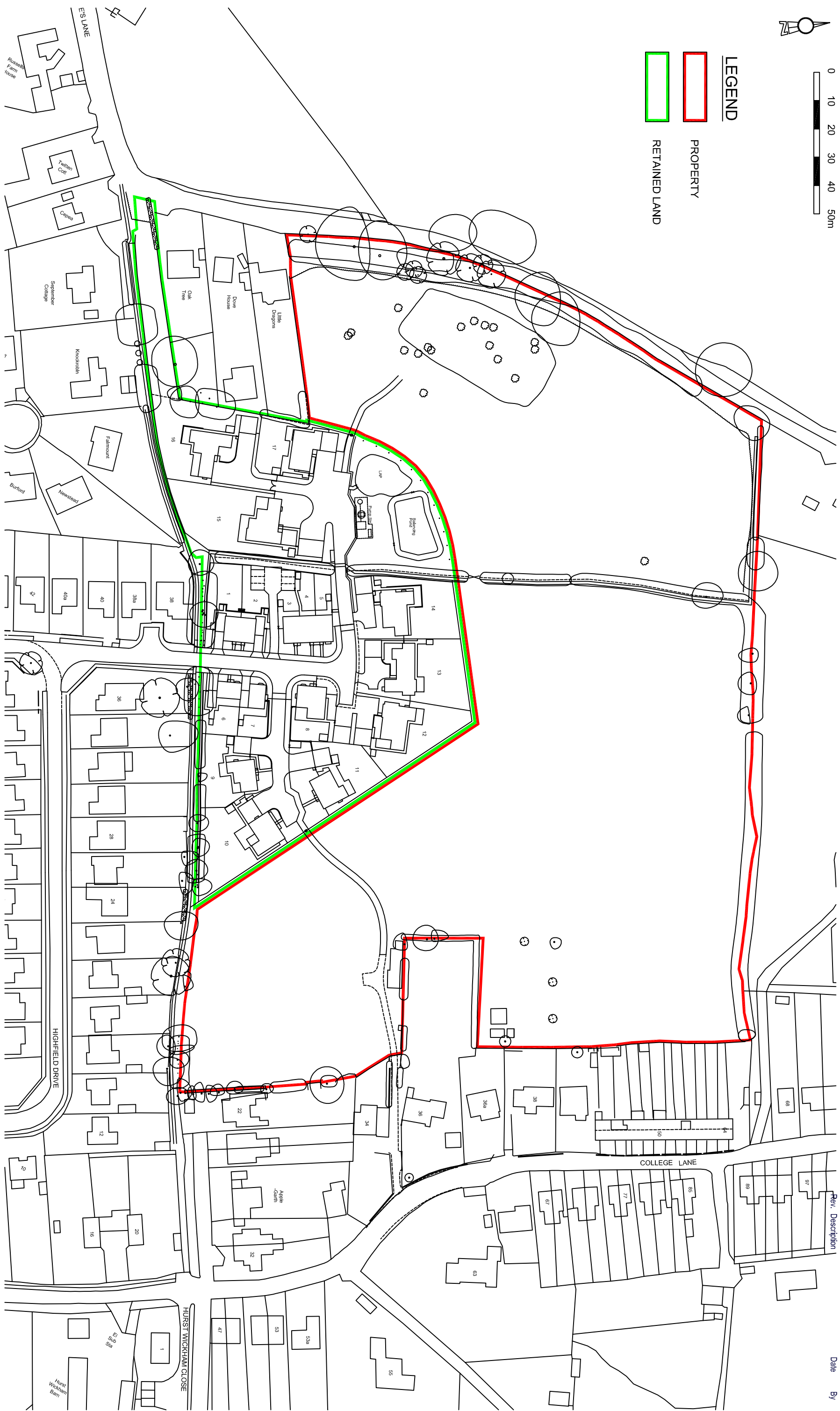




**LEGEND**

-  PROPERTY
-  RETAINED LAND



Rydon Homes Ltd  
 Rydon House  
 Station Road  
 Forest Row  
 East Sussex  
 RH18 5DW  
 T 01342 825151  
 E-mail: design@rydon.co.uk

**Highfield Drive  
 Hurstpierpoint**

Open Space Transfer Plan

Drawing No: 955-L-24

Date: March 2016  
 Drawn by: MAH  
 Scale: 1:1250 @ A3  
 Rev:

Rev. Description Date By